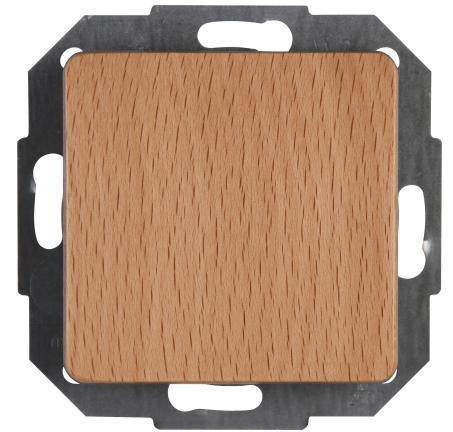


Art.No.	article name
618631089	Universal switch (off and change-over)

Universal switch (off and change-over switch), 10AX, 250V~, MILANO, beech



Technical data	618631089
Connection type	Push-in clamp
Feedback-signal contact	no
Material	Wood
Type of fastening	Mounting with claw and screw
Number of rockers	1
Impact strength	IK00
Number of modules (module system)	1
Min. depth of built-in installation box	32.0 mm
Compatible with Apple HomeKit	no
Compatible with Google Assistant	no
Compatible with Amazon Alexa	no
Nominal voltage	250
Mounting method	EV000383 - Flush-mounted (plaster)
Assembly arrangement	Basic element with central cover plate
Method of operation	Rocker/button
Colour	Wood
Halogen free	yes
With mounting plate	no
Surface protection	Untreated
Rated current	10.00 A
RAL-number (similar)	3013
Switching current for fluorescent lamps	10 AX
Push button switch	no
Width of device	71.0 mm
Height of device	71.0 mm
Depth of device	48.0 mm
IFTTT support available	no
Washing machine switch	no
Illumination	No
Label space/information surface	No
Surface finishing	Glossy
Wiring system	Two-way switch
Suitable for degree of protection (IP)	IP20
Anti-bacterial treatment	no
Compliant with UK Building Regulations Part M	no
Heating switch	nein

Technische Beschreibungen, Abbildungen und Leistungsangaben stellen keine zugesagten Eigenschaften dar, sondern sind nur unverbindliche Informationen. Änderungen aufgrund technischen Fortschritts, Normänderungen, veränderter Fertigungsverfahren oder Konstruktionsverbesserungen bleiben ausdrücklich vorbehalten. Stand: 10.04.2024

Technical data

618631089

Farbe (Kopp-Bezeichnung)

beech